

EVENT PLANNER

YOUR DAILY PROGRAM



HERITAGE MAKERS FAIR | www.makersfair.au

THE FAIR: SHOWGROUNDS, 77 EXHIBITION RD, GYMPIE

THE FARM: 77 RADTKE RD, KIA ORA near GYMPIE

THE RELICS: 4/ 5 EDWIN CAMPION DRIVE, GYMPIE



HERITAGE MAKERS FAIR

Event Guide HERITAGE: makersfair.au/wp-content/uploads/YOUR-GUIDE-HERITAGE.pdf
Event Guide QUILT & CRAFT: makersfair.au/wp-content/uploads/YOUR-GUID-QCa.pdf



1 THE FAIR



2 THE FARM



3 THE RELICS

THREE SITES ONE TICKET!

1 THE FAIR

77 EXHIBITION RD GYMPIE

Meet over 80 makers of heritage and rare trades, from blacksmiths and forgers, woodcrafters and coopers to weavers, pliers and ropemakers - inspiring artisan displays, exquisite quilting and award-winning crafts.

2 THE FARM

77 RADTKE RD, KIA ORA

Over 90 Massey Ferguson tractors - from the grand old models of the 1930s to the younger stars - each has a story and role in Australia's agricultural heritage. Meet the collectors Roy and his son Clinton who will guide you through this museum-quality collection. Live music, bar, food!

3 THE RELICS

4/ 5 EDWIN CAMPION DR, GYMPIE

Roadside Relics - Australia's leader in Petroliana and Garagenalia! Explore a collection built over 41 years: antique and vintage fuel bowsers, signs, oil bottles and tops, plus motorcycles, cars, rarities and historical treasures from the 1900s to 1970s. A must for any motoring enthusiast!

THINGS YOU NEED TO KNOW

Event Guide HERITAGE:
makersfair.au/wp-content/uploads/YOUR-GUIDE-HERITAGE.pdf

Event Guide QUILT & CRAFT:
makersfair.au/wp-content/uploads/YOUR-GUID-QCa.pdf



World Heritage Listed
K'GARI
(formerly Fraser Island)

Rainbow Beach
Double Island Point
Coloured Sands

Mary Valley Rattler Steam
Train journeys through the
picturesque Mary Valley



OPENING TIMES

PARKING: NO ACCESS INTO THE SHOWGROUNDS UNTIL 8am

EVENT GATES OPEN 8.30am
SATURDAY JULY 5, 8.30am - 5pm
SUNDAY JULY 6, 8.30am - 3pm

PLEASE BRING CASH
NO ATM ONSITE

UPGRADE

With 3 sites now to see, Weekend Passes are popular. If you have a Saturday Day Ticket, you can upgrade to a Weekend Pass at the Event Entry, before 3pm on Saturday

FIRST AID

Beside the Event Entry
Gympie Volunteer First Aid Services
P: 0410 312 737

CARAVAN PARKS WITH VACANCIES

Standown Caravan Park

91 Radtke Road, Gympie, Qld
E: bookings@standown.com.au
W: www.standown.com.au
P: 07 5486 5144

Sublime Farm & Brewery

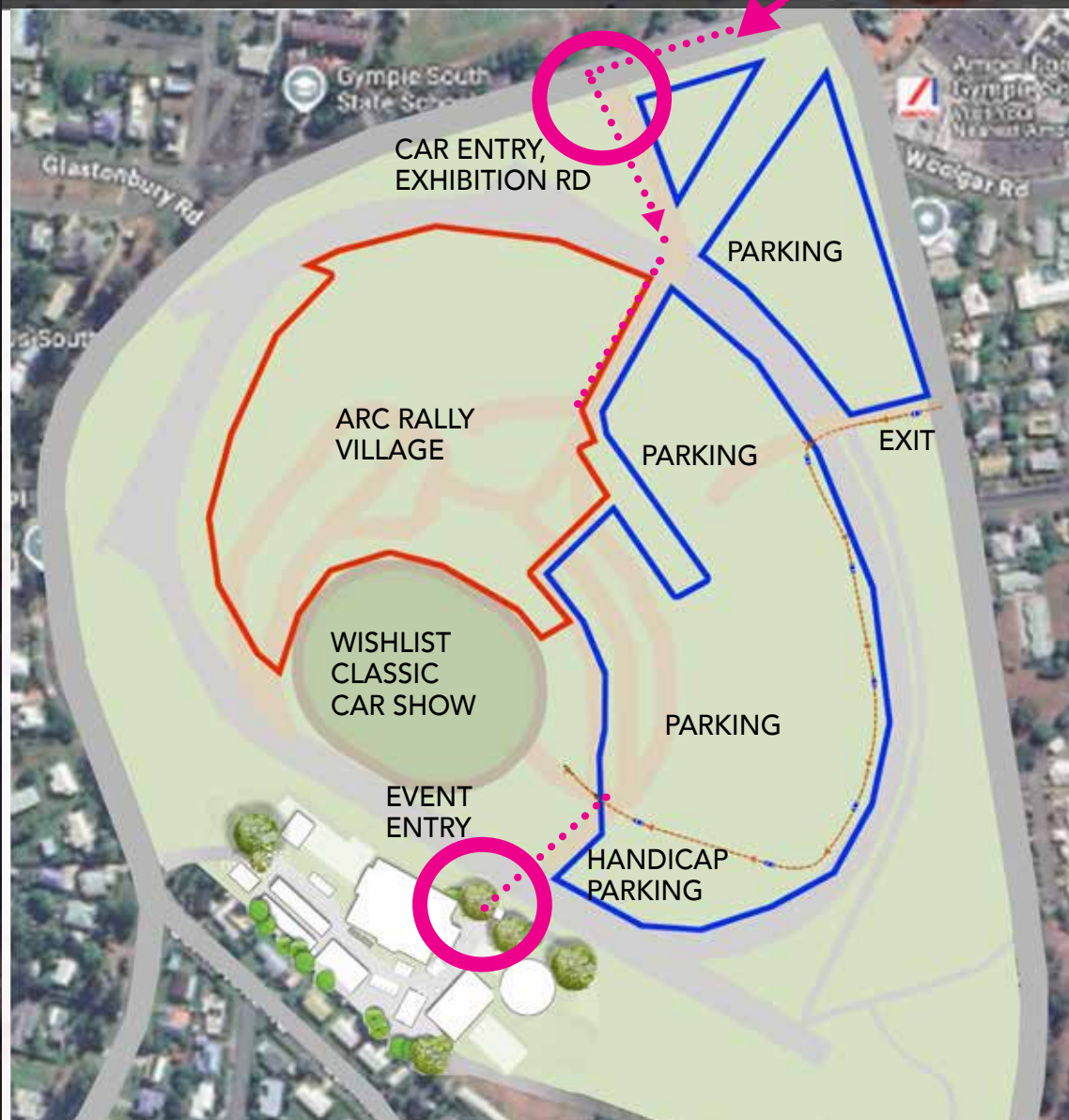
33 Priddy Road, Kia Ora, Qld
W: www.sublimefarm.com.au
P: 07 5486 5535

Hangar O

2484 Bruce Highway
Gunalda, Qld
E: hangaro@mail.com
W: www.hangaro.com.au
P: 0412 787 829

SITE 1 THE FAIR

77 EXHIBITION RD,
GYMPIE



GETTING THERE

From the south, it's about a 2-hour drive from Brisbane. On the approach to Gympie, follow the exit sign off the new highway to Gympie and follow the road to Exhibition Rd. Turn left, cross the Mary River over the Kidd Bridge.

From the north, turn right into Exhibition Rd, cross the Mary River over the Kidd Bridge.

You will soon see the Showgrounds on the left. There will be signage for the event and for the Qld Car Rally, with plenty of directional assistance.

THE FAIR

- 05 SITE/ VENUES MAP
- 06 SATURDAY PROGRAM
- 07 SUNDAY PROGRAM
- 08-11 TOP THINGS TO DO
- 12 KIDS PROGRAM
- 13 FINE FAYRE - FOOD GUIDE

THE FARM

- 14 THE STORY
- 15 THE LOCATION

THE RELICS

- 16 SITE/ VENUES MAP

AND MORE

- 17 STUDIO TRAILS
- 18 TICKETS, CONTACTS
- 19 SPONSORS

CRAFT BEER, MEAD & GIN TASTINGS, MUSIC, FOOD! AROMATIC! MEALS BY CELEB CHEFS MATT GOLINSKI AND GLEN BARRATT

1 BREWERS CORNER

BLACKSMITH; COOPER; LAMP/ GLASSWORKER; MEADMAKER; GINMAKER; SILVERSMITHS; GEM SMITHS; SADDLER; WHIPMAKER; HATMAKER; TINSMITH; LEATHERWORKER; PRINTER; BOOKBINDER; MOSAIC ARTISAN; LEADLIGHTER; COPPERSMITH; SIGNWRITER

2 HERITAGE LANE

MILLING, SLAB BENCH DEMONSTRATIONS, LATHE TURNING, SHOU SUGI BAN

3 MOOLOO TIMBER CO MEET THE MILLERS!



4 WOODCRAFT

MASTER WOODCARVERS; & TURNERS; WHITTILER; ENGRAVER; SPOONSMITH; SCROLLSAWER; PYROGRAPHER; KNOTTER; PENSMITH; TOOLMAKER; SHINGLESPLITTER; LUTHIERS; WALKING STICK MAKER

5 STEAM ENGINES

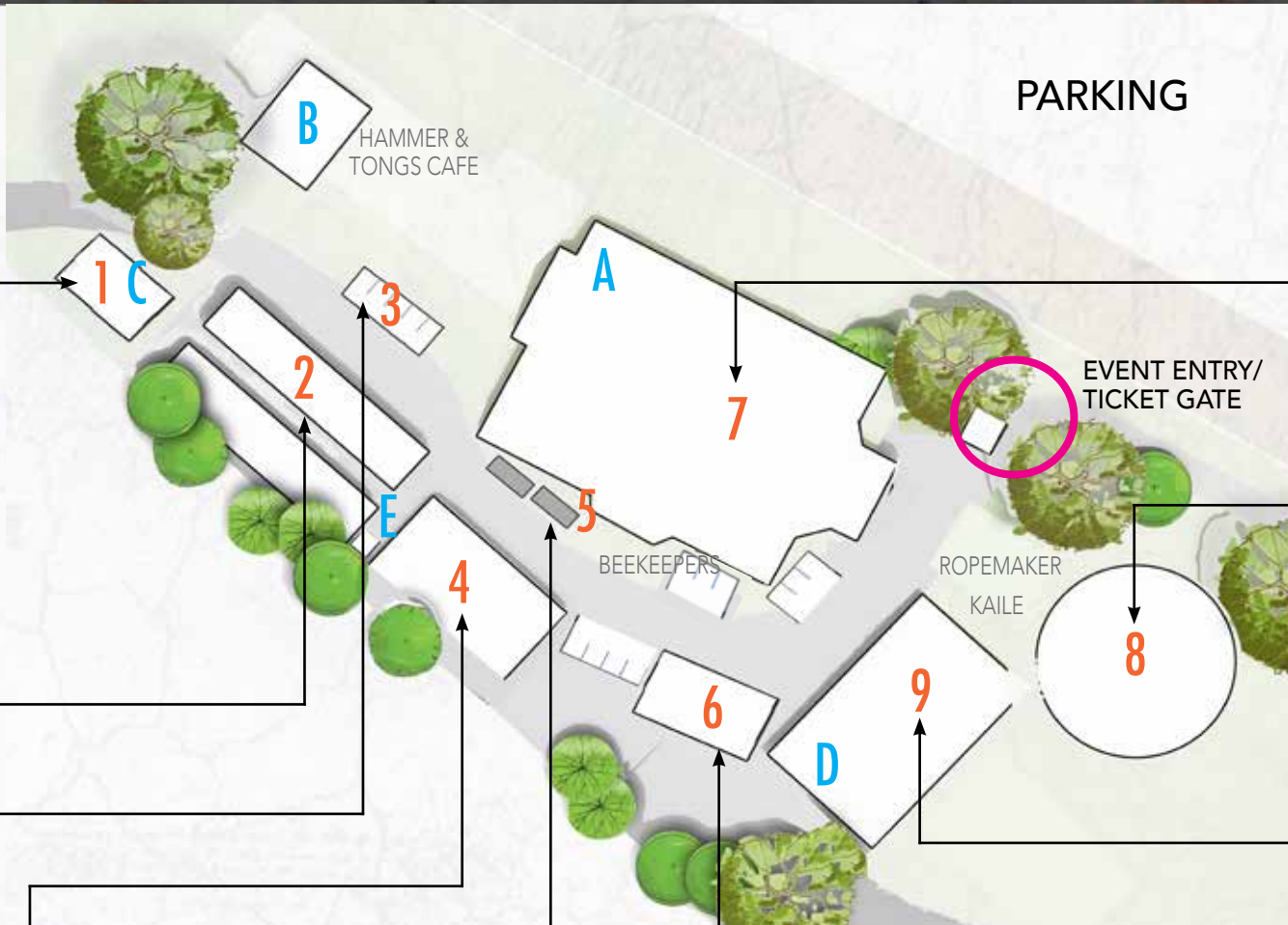
RARE APPEARANCE: MARSHALL BRITANNIA COLONIAL PORTABLE 4HP STEAM ENGINE - YES, YOU'LL SEE AND HEAR IT IN ACTION! ALSO ON SHOW: A CLASSIC FARMALL A FROM 1930S/40

6 BYTHEWAY STAGE & CAFE

WITH A PROGRAM OF SPEAKERS, DEMOS, MORE

PLUS TRACTOR EXPO

VINTAGE, RARE TO LATE MODEL, WITH HISTORIC SMALL ENGINES, VINTAGE CARS
77 RADTKE RD, KIA ORA



PARKING

QUILTING SHOWCASE; OLD QUILTERS EXHIBIT; EXTREME SPORT OF TEXTILE CRAFTS IN STREET ART; MATERIAL MAKEOVERS; EMBROIDERY; MAKERS MARKETS LITTLE HAVEN CAFE

7 PAVILION

EXCITING DEMONSTRATIONS, DAILY HARNESSING SHOWS, MEET MAC THE CLYDESDALE

8 WHEELWRIGHT

BASKETWEAVERS; CANTIQUITY; ECO-DYERS; ATASDA; SPINNERS; WEAVERS; COBBLER; HAND-DYER; FELTER; WHEATWEAVER; LACEMAKERS; INKLE LOOM WEAVERS; TINTYPER; OFF GRID EXPO

9 DOMESTIC ARTS

CAFES

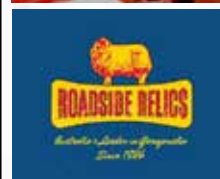
- A LITTLE HAVEN CAFE
- B HAMMER & TONGS
- C BREWERS CORNER WITH MATT GOLINSKI & GLEN BARRATT
- D BYTHEWAY FOOD COURT
- E ESPRESSO COFFEE

SATURDAY PROGRAM

| | BYTHEWAY STAGE & CAFE | BEEKEEPERS STAND | MOOLOO MILLERS | WHEELWRIGHT ARENA |
|---------|---|--|--|---|
| 9.00am | | | Milling Boards | Meet the Clydesdale! |
| 10.00am | | | | |
| 10.30am | Cooloola Community Orchestra Kick off your morning with a coffee and orchestral selections - classical to popular, Irish, Abba, Beatles, more | | | Demonstration Harnessing & Driving a Clydesdale |
| 11.00am | | | Slab Bench Seat Demonstration Watch the full process of milling to dressing to gluing, to assembly as the team build a rustic one of a kind chair! | |
| 11.30am | Masterstrokes: Master woodcarver Bruce Weier's inspiration - Grinling Gibbons (1648-1721), reputedly the most famous woodcarver of all time | | | |
| 11.45pm | | | | Wheelwright Display With fire, iron & wood, an educational and informative delivery. Meet Rick Stanfield, third generation Wheelwright. |
| 12.00pm | Masterstrokes: Making Mead From his grandfather's recipe, Andy keeps the tradition alive and adds his own spin to the mead making process | | | |
| 12.30pm | | | | |
| 1.00pm | Author Jeanette Wehl A chronicle of one lifetime: A Bushman's Life: war, love, hope and enduring spirit, life on the land | | | Mac's lunchtime! Enjoy the Static Display while he refreshes. |
| 1.15pm | | Honey Spinning Demo Beekeepers Stand | | |
| 1.30pm | Gympie Family History Our pioneers brought to life: the story of Gympie, the town that saved Queensland from bankruptcy | | Milling/ Shou Sugi Ban Japanese wood preservation technique of charring with fire to preserve the wood | Demonstration Harnessing & Driving a Clydesdale |
| 2.00pm | | | | |
| 2.30pm | Lifestyle Choices, Living Off Grid Off Grid Expo's Di Woodstock discusses ways to enable living off the grid, tips and the Expo | | | Wheelwright Display With fire, iron & wood, an educational and informative delivery. Meet Rick Stanfield, third generation Wheelwright. |
| 2.45pm | | | | |
| 3.00pm | Heartwood Project Signature Initiative of Mooloo Timber Co From tree to treasure: crafting legacies for homes with a story to tell | | | |
| 3.45pm | | | | |
| 4.00pm | Drawing of the Raffles | | Milling/ Shou Sugi Ban Japanese wood preservation technique of charring with fire to preserve the wood | Meet the Clydesdale! |
| 4.30pm | Celebrity Chef COOK OFF Matt Golinski and Glen Barratt battle for "dish of the day"! Savoury, sweet, you judge the winner! | | | |
| 5.00pm | | | | |

THE FARM

OPEN ALL DAY! RADTKE RD, KIA ORA - Vintage, Rare to Late Model Massey Ferguson Tractor Collection (over 90!), Small Engines + Music, Food, Bar - MEET THE COLLECTORS



THE RELICS

OPEN ALL DAY! 4/25 Edward Campion Drive, Gympie - New premises of Roadside Relics, Australia's leader in Petroliana & Garagenalia 1900-1970s - MEET THE COLLECTOR



COOLOOLA COMMUNITY ORCHESTRA

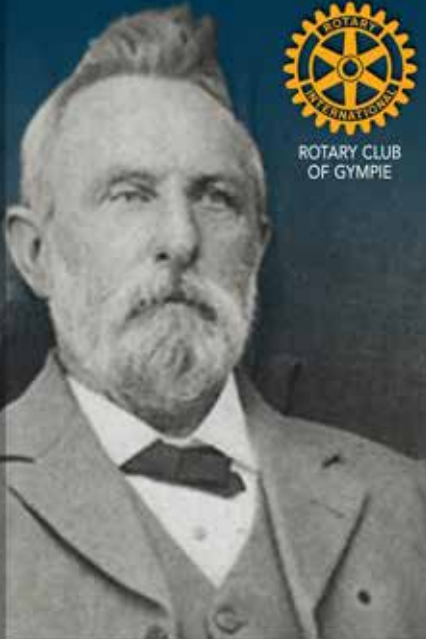


MOOLOO TIMBERS

- milling demonstrations
- slab bench seat demonstrations
- lathe woodturning
- Shou Sugi Ban



BYTHEWAY CAFE



EDWARD BYTHEWAY
Born 1940 - Died GYMPIE 1905

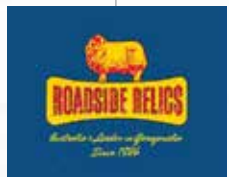
GYMPIE FOUNDING FATHER
- initiated Gympie Arts Movement
- established the School of Arts building - this iconic building is now Gympie Regional Art Gallery

SUNDAY PROGRAM

| | BYTHEWAY STAGE & CAFE | BEEKEEPERS STAND | MOOLOO MILLERS | WHEELWRIGHT ARENA | THE FARM | THE RELICS |
|---------|---|--|--|--|-------------|---------------|
| 9.00am | | | Milling Boards | Meet the Clydesdale! | | |
| 10.00am | Cooloola Community Orchestra Plan your day with a coffee and orchestral selections - classical to popular, Irish, Abba, Beatles, more | | | Wheelwright Display With fire, iron & wood, an educational and informative delivery. Meet Rick Stanfield, third generation Wheelwright. | | |
| 10.30am | | | Lathe Woodturning Watch a rustic old log be turned into a lazy susan centrepiece. | | | |
| 11.00am | Masterstrokes: Master Papermaker & Bookbinder Dion Channer recounts highlights of a lifetime learning ancient craft from traditional masters world-wide | Honey Spinning Demo Beekeepers Stand | | Demonstration Harnessing & Driving a Clydesdale | | |
| 11.30am | | | | | | |
| 11.45pm | Masterstrokes: Bespoke Toolmaker Ironbark Toolworks' Devon Campbell: innovative designer of world-class purpose-built woodworking hand tools | | | | | |
| 12.00pm | | | | | | |
| 12.30pm | Your Mates Craft Beer Their story started after a few too many cold beers on the blue couch... now in the Aussie Top Ten. Here's how | | | | | |
| 1.00pm | | | | | | |
| 1.45pm | Drawing of the Raffles | | | | | |
| 2.00pm | Silent Auction Winners Announced | | | | | |
| 2.00pm | Celebrity Chef COOK OFF Matt Golinski and Glen Barratt battle for "dish of the day"! Savoury, sweet, you judge the winner! | | | | | |
| 2.30pm | | | | | | |
| 3.00pm | | | | | | |
| | | | Milling/ Shou Sugi Ban Japanese wood preservation technique of charring with fire to preserve the wood | Lunchtime! Static Display Wheelwright Display With fire, iron & wood, an educational and informative delivery. Meet Rick Stanfield, third generation Wheelwright. | | |

OPEN ALL DAY! 77 RADTKE RD, KIA ORA - MF Tractor Collection 1937 - late model (over 90!), Music, Food, Bar

OPEN ALL DAY! 4/25 Edward Campion Drive, Gympie Australia's leader in Petroliana & Garagenalia 1900-1970s



TENT CITY HIRE
EVENTS & FESTIVALS

TOP THINGS TO DO: HIGHLIGHTS BY VENUE



CARBATEC IN THE WOODCRAFT ARENA

Meet master carvers, fretworkers and turners, spoonsmiths, luthiers, whittlers, sawscrollers, pyrographers, the axe smith and more while in the Carbatec Woodcraft Arena – and say g'day to the crew at the Carbatec stall!

HAVE A GO at KNOT-TYING

Visit Mark at his purpose-built knot-tying station in the Carbatec Woodcraft Arena. With Mark's guidance, try your hand at essential knots - bows, hitches, cloves and more - and gain a valuable skill. Fun for adults and kids alike!
The oldest sailing knot? A 10,000-year-old clove hitch on a Danish fishing hook!



CHAMPIONS

Check out all the FIRST prizes and the GRAND CHAMPION, awarded at the Gympie Show!



SAWSTOP DEMOS

Visit the Carbatec stall, loaded with new products, take in some informal demos including the popular Sawstop demos (3 per day - they're loud and fast!)



COMMUNITY BANK GYMPIE BRANCH, BENDIGO BANK IN THE QUILT & CRAFT SPECTACULAR

A showcase of traditional and contemporary quilting, art quilts, fibre & textile arts, located within the Pavilion. See: Qld Quilters selected Best of Shows, Award-Winners over the years; Material Makeovers; The Extreme Sport of Textile Crafts in Street Art.

JOIN IN THE SILENT AUCTION

2 VINTAGE ITEMS VIEWING, BIDDING IN THE PAVILION

Place your bid early - check back often to see if you've been outbid. You can raise your bid on the bidding sheet! The highest bid at 2pm on Sunday 7th July gets the prize. Announced Bytheway Cafe at 2pm. Reserves apply.



STITCHERS! GRAB A SHOWBAG

See Lyn and Sue at Gympie Patchwork to grab a great Showbag with treats inside.
Be first at the stand not to miss out.



SLOW STITCHING

Learn the art of Slow Stitching - demonstrations daily at Indigo Niche, stallholder in the Pavilion!

TOP THINGS TO DO: HIGHLIGHTS BY VENUE

YOUR MATES

IN THE BREWERS CORNER

Catering to both the already-devoted lovers of craft brews and those who are curious to discover some new and diverse flavours, start with a tasting paddle, refer to your Tasting Notes.... experience, discover, enjoy!



TASTE MEADS, GINS GET A PADDLE!

Serving craft beers, wines, tastings of meads, gins - this is the place to be for a bit of R&R! Try a mead - you're in for a surprise! From his grandfather's recipe, Andy keeps the tradition alive and adds his own spin to the mead making process.

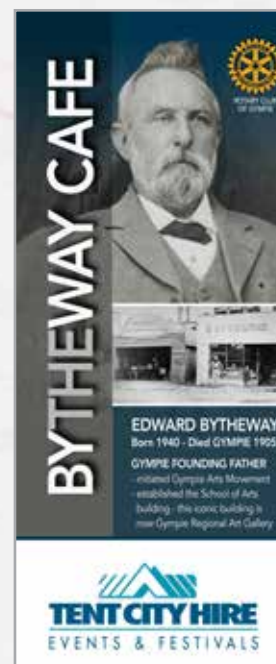
AROMATTIC

Celebrity chef Matt Golinski joins forces with Glen Barratt, the 2025 ACADA Pastry Chef of the Year! Enjoy Matt's delicious spiced pumpkin and ricotta fillos with fresh fattoush - don't forget to leave room for one of Glen's irresistible desserts. Available from the AroMATTic van!

TENT CITY HIRE

IN THE BYTHEWAY CAFE & STAGE

Named after Gympie founding father, Edward Bytheway, initiator of the fledgling town's School of Arts movement, this venues' stage sees an inspiring line-up of masters, designers, innovators and more.



THE GREAT CELEBRITY COOK-OFF!

SATURDAY 4pm & SUNDAY 2pm
BYTHEWAY STAGE

Cast your vote! Who gets "dish-of-the-day" in the cook-off between celeb chef Matt Golinski or his long-term buddy Glen Barratt, 2025 ACADA Pastry Chef of the Year.



You decide!

AND! Matt demonstrates the heritage craft of making butter and ricotta!



Kingsway Computer Consultants, Gympie's longest singly owned and run I.T. business, was established in 1995. At Kingsway our vision is to provide our clients with an experience beyond the stereotyped computer shop.

WITH THANKS TO



Gympie Towing



TOP THINGS TO DO: HIGHLIGHTS BY VENUE



QLD HYRO IN HERITAGE LANE

Normally the horse tie-up stalls, these "lane-ways" house a host of heritage makers: forgers, smithies, leadlighters & lamplighters, makers of hats, buckets, pots, twiners of leather...

HAVE-A-GO*

COPPERSMITHING, HERITAGE LANE

Do a make'n'take with the Coppersmith! Have a go at working with copper, make a ring or a rose to take home! Projects for 5yo to adults (small charges for materials apply)

HAMMER YOUR OWN, HERITAGE LANE

Hammer your own silver finding, create a pendant with award-winning lampworker Michele of emubeads.

OTHER HAVE-a-GOs IN HERITAGE LANE: LEADLIGHTING, MOSAICS, SIGNWRITING

**SOME FEES MAY APPLY TO COVER COST*

A SURPRISE TO FIND!

Saturday & Sunday, look for the emubeads' GIFT box! It will be hidden somewhere in plain sight. Find it, redeem your "FIND" at emubeads, heritage lane for a **FREE GIFT!**

FORGE AHEAD

Meet Gympie's 2025 Citizen of the Year, two-time world champion blacksmith Dan Davie. Through his "Forge Ahead" program, Dan mentors local youth and keeps the heritage trade alive. Catch him onsite, guiding future blacksmiths in action.



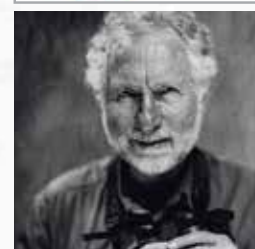
RSL GYMPIE SUB BRANCH IN THE DOMESTIC ARTS

A centre for fibre, textile and domestic arts, for weavers of wool, wire, fibres, reeds and weeds, eco-dyers, medieval arts including a theatre, Cantiquity and the Tintyper!

TRY KAILES

What is it? Kailes is a medieval precursor to the modern game of skittles, a popular pastime in Europe during the Middle Ages. The pins used in kailes were called "kittle-pins", later "skittle-pins," which gave the modern game its name.

DOMESTIC ARTS, SATURDAY



GET TIN-TYPED

Introduced in Paris in 1853, tintypes are photographs created on a thin metal sheet coated with lacquer, producing a raw beauty. At the Fair, Raoul will have his darkroom set-up, his camera ready to create stunning portraits on the spot!



WEAVING & KNITTING

The Spinners & Weavers will introduce you to these rewarding and ancient crafts.
HAVE A GO!

WITH THANKS TO



Gympie Towing



Community Bank
Gympie & District

Bendigo Bank

Sponsor: Quilt & Craft Spectacular, 2025
Gympie Rotary HERITAGE MAKERS FAIR 2025



TOM GRADY REAL ESTATE, RURAL SUPPLIES & COUNTRY CLOTHING

REAL ESTATE 155 MARY ST, GYMPIE P: 5482 6622 FB tomgradyreal-estate
RURAL SUPPLIES 55 TOZER ST, GYMPIE P: 5482 1692 FB tomgradyruralmerchandise
COUNTRY CLOTHING 26 NASH ST, GYMPIE P: 5482 1824 FB tomgradycountryclothing



OUR WHEELWRIGHT RICK STANFIELD, ONE OF THE FEW REMAINING TRADITIONAL WHEELWRIGHTS, LEARNED HIS TRADE FROM HIS GRANDFATHER.

"It's a lot of work to prepare for each wheelwrighting demonstration. Before each show, the hub, the spokes and the wooden felloes (outer rim) need to be prepared, taking many long hours to hone, shape and precision dowel them together." says Rick.

During the show, a fire is built and stoked, ready for the steel rim. When the hot coals are just the right temperature, Rick and his team begin an almost choreographed "ballet" around the fire, masterfully rendering the rim malleable enough to be able to fit it tightly and permanently to the wooden wheel. The tossing of water starts and a constant cloud of steam billows. The sight and sounds of the wheelwright, working frenetically with his hot metal rim, the "chink, chink" of his smithy's tools, the hiss and smell of the rising steam, are indeed evocative of another time in history.

FULL DAILY PROGRAM ON
WEBSITE www.makersfair.au.

TWICE DAILY SHOWS | MEET MAC THE CLYDESDALE | HARNESSING DEMOS

FAMILY PROGRAM

AT THE EVENT ENTRY

HAVE-A-GO CRAFT WITH CWA
IN THE PAVILION, MAKE'N'TAKES

Saturday: 10.30am - 11.30am and
2.00pm - 3.00pm

Sunday: 10.30am - 11.30

Ages 5 - 12 years

(7 and under to be accompanied
with an adult) (small charges apply)

KAILES

Try Medieval ten-pin
bowling! See the
Riverbend crew,
Domestic Arts, Saturday.

HAVE-A-GO CRAFT:

Leadlighting, Mosaics.
Signwriting, Weaving,
Knitters... and more.
(small charges may apply)

LOTS OF KNOTS!

Woodcraft Arena -
master knotter Mark will
show you the ropes of
knot-tying!

A DAY AT THE FAIR FOR THE FAMILY!

"MINI-MAKERS" PROGRAM

WIN!

Bring your family for an
adventurous, interactive and fun
day out for all!

AND - by entering the
Heritage Hunt, you
could WIN a Family
Pass aboard the
Mary Valley Rattler!



GYMPIE ROTARY
**HERITAGE
MAKERS FAIR**

HANDS-ON WITH THE MAKERS
INTERACTIVE HAVE-A-GO's!

MAKE A COPPER RING OR ROSE

Do a make'n'take with the
Coppersmith! Have a go at working
with copper, make a ring or a rose to
take home! Projects for 5yo to adults,
see the coppersmith in Heritage Lane
(small charges for materials apply)



GYMPIE ROTARY
**HERITAGE
MAKERS FAIR**

ALL PLAYERS WIN A PRIZE!

HERITAGE HUNT

Register in the Pavilion, start
your hunt, solve the clues! Every
participant wins a small prize, and
one lucky explorer will score a

FAMILY PASS
for the iconic
Mary Valley Rattler!



All Aboard!

MARY VALLEY
RATTLER

MARY VALLEY RATTLER

STEAM TRAIN



BOOK NOW

WWW.MARYVALLEYRATTLER.COM.AU

MARY VALLEY RATTLER
10 TOZER ST, GYMPIE
PH: 5482 2750



SCAN ME

A FAYRE FEAST

+ CELEB CHEF
COOK-OFFS!
including a quick
demo on BUTTER &
RICOTTA MAKING

FROM GOURMET TO STREET FOOD - INDULGE!

A

LITTLE HAVEN CAFE IN THE PAVILION

Focaccia melts, rice paper rolls, quiches, soups, ribbon sandwiches, hot meals, a selection of cakes, espresso coffee, chilled drinks.

B

HAMMER & TONGS CAFE

Hearty country fayre - think classic burgers, jaffles, crispy chips and hotbox eats (with veg options), plus soft drinks, tea, instant coffee. Caterers Set4Life, raising funds to support the wellbeing of residents of 17 remote communities, will work alongside the Gympie Freemasons.

C

ALL NEW BREWERS CORNER!

Serving craft beers, wines, tastings of meads, gins - this is the place to be for a bit of R&R! Celebrity chef MATT GOLINSKI teams up with GLEN BARRATT (2025 ACADA Pastry Chef of the Year). Tuck into Matt's tasty spiced pumpkin & ricotta fillos, served with fattoush - save room for Glen's sweet treat! You'll find the AroMATTic van in Brewers Corner.

D

FOOD COURT WITH CHOICES GALORE

Including gluten free, vegetarian options: grab a drink, a treat and settle in at the Bytheway Cafe - the stage offers a full program!

The Cob'n'Dog Bar: Loaded corn cobs, sachet coffee, tea, hot chocolate (Gympie Womans Shed)

Gourmet Hot Dogs: Plain; Smokey BBQ; Big Mac Dog; Mexican Dog; Hawaiian Dog; The Lot Dog (Gympie West School)

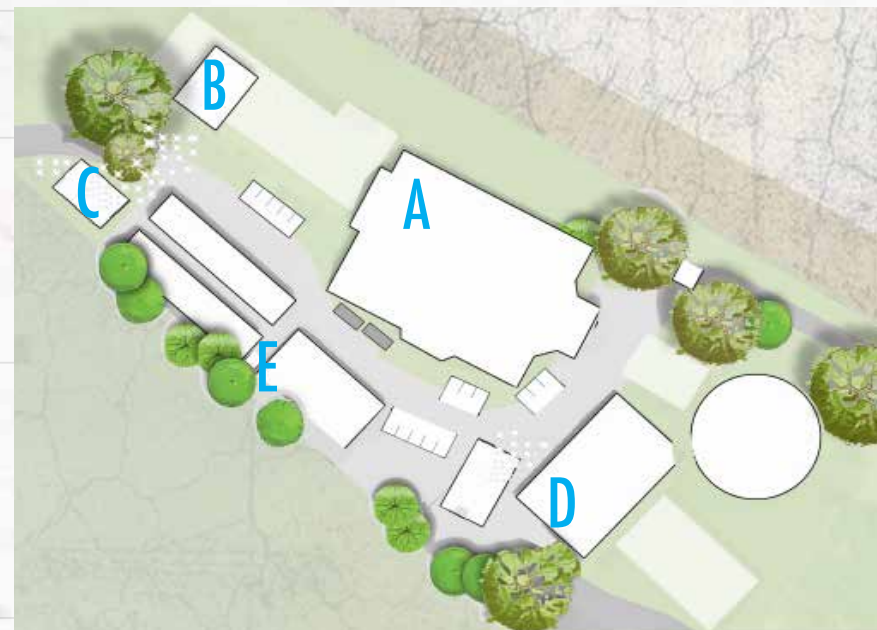
PLUS Ploughmans Packs, delicious loaded fries, nachos, homemade lemonade (Gympie Women's Network)

Sandwiches, wraps, hot brekky rolls, pies and sausage rolls + **espresso coffee** (Mary Valley Rattler)

And more! Including Gluten Free options.

E

E for **Espresso** - Need a pick-up and looking for espressos? Head to the Little Haven Cafe in the Pavilion, the Food Court or the espresso van beside Heritage Lane and the Woodcraft Arena.... follow the coffee aroma.



CELEBRITY CHEF COOK OFF!

BYTHEWAY STAGE, 4PM SATURDAY & 2PM SUNDAY!

Celebrity chef Matt Golinski and pastry chef extraordinaire Glen Barratt, 2025 ACADA Pastry Chef of the Year, go dish-to-dish in a battle for plate of the day! For almost an hour each event day, these two old mates will whip up a masterpiece each - with tips, a few laughs and plenty of banter! You decide - who wins plate of the day?

HIGHLIGHT:

DURING THE COOK-OFF, MATT DEMONSTRATES HOW THE HERITAGE ART OF MAKING BUTTER AND RICOTTA





VINTAGE, RARE TO LATE MODEL TRACTORS & HISTORIC SMALL ENGINES

Just 30 minutes from the Gympie Showgrounds, the Roddau family's 400-acre farm has been home to five generations since 1921.

Over the past century, they've built what's believed to be Queensland's second-largest Massey Ferguson and Massey Harris tractor collection - with over 90 machines, spanning from 1937 to 2023. Some are incredibly rare, with only one or two left in the country. Each tractor has its own story - and now, for the Gympie Rotary Heritage Makers Fair, the family is opening their sheds, polishing the collection, and sharing it all with the public. As Roy Roddau puts it: "It's for future generations to see what was out there way back".



SITE

2

THE FARM

77 RADTKE RD,
KIA ORA



VINTAGE, RARE TO LATE MODEL TRACTORS & HISTORIC SMALL ENGINES

Every tractor in the collection has its own story - where it came from, a special history, many bought sight-unseen. Collectors Roy Roddau and son Clinton, equally as passionate about the Collection, often wondered what they would find when they went to pick up a sight-unseen purchase, but claim they have never yet been disappointed. Some came in pieces like a jigsaw puzzle. One once belonged to Sir Joh Bjelke-Petersen. Another, a 1974 MF 1505 found in Biloela, had a tree growing through it - it hadn't been started for 17 years. Roy and Clinton took a battery and some fuel "and away she went, first go."

There's a display of vintage small engines, presented by Gympie & District Historic Machinery Club - see and hear these working machines, testaments to days gone by.

With live music, snacks and a bar, it's a great way to round off, or start your day - sharing stories, knowledge, and passion in a world of tractors and their place in Australian agricultural history.

WHERE - 77 Radtke Road, Kia Ora - entry is included in your HERITAGE MAKERS FAIR ticket!
www.trybooking.com/CYKKU

READ MORE: <https://makersfair.au/vintage-rare-tractors-small-engines-expo/>



World Heritage Listed
K'GARI
(formerly Fraser Island)

Rainbow Beach
Double Island Point
Coloured Sands

Mary Valley Rattler Steam
Train journeys through the
picturesque Mary Valley

Noosa



SITE 3 THE RELICS

4/ 5 EDWIN CAMPION DR,
GYMPIE



ROADSIDE RELICS

SITE 3, INCLUDED IN YOUR TICKET

AUSTRALIA'S LEADER IN PETROLIANA & GARAGENALIA

4/ 25 EDWIN CAMPION DRIVE, GYMPIE

Roadside Relics is Australia's longest established full time business specialising in all facets of what is now popularly known of as Petroliana and Garagenalia. Put simply, they specialize in motoring antiques with emphasis on petrol, oil and other motor garage-related collectables.

A vast range of original and replica items include petrol bowzers, pump globes, enamel signs, oil bottles and tops, oil bottle racks, decals, restoration items and literature. "At the time of writing stock on hand includes over 50 petrol bowzers, 250 signs and in excess of 500 oil bottles and tops."

Plus a host of other genuine original old motoring treasures - motorcycles, cars, rarities and historical treasures from the 1900s to 1970s. A must for any motoring enthusiast!

More: www.makersfair.au/a-treasure-trove-of-roadside-relics/



DISCOVER OUR REGION



Ours is a region of contrasts – powdery, white-sand beaches, unspoiled coastlines, majestic hinterlands, lush rolling hills and stunning nature all around us.

What connects us all is our pioneering spirit and our deep love of the land and, the pride we take in sharing it with you.

So take some time to get to know us better and then you'll understand why we wouldn't trade it for the world.

www.visitgympieregion.com.au



THE HERITAGE MAKERS FAIR PARTNERS WITH GYMPIE'S STUDIO TRAILS

Take a rare opportunity to explore behind the scenes of the private studios of artists and artisans and discover a hidden side of the beautiful Gympie region. Meet the artists and share the secrets of their creative process.

Gympie Region Studio Trails is an annual initiative of Gympie Regional Council that invites artists, artisans, creatives, heritage workers, and designers to open their studio doors and share their passions with you.

Join us for Gympie Region Studio Trails 2025 and uncover one of Australia's most vibrant and resilient creative communities.

5 & 6 July - **TRAIL 1** Gympie and Surrounds

12 & 13 July - **TRAIL 2** Gympie and the West

19 & 20 July - **TRAIL 3** Gympie and the East

26 & 27 July - **TRAIL 4** Gympie and the South

INFORMATION:

Gympie Regional Gallery

P: 07 5481 0733

W: gympieregionstudiotrails.com.au

Trail Bus

The Gympie Regional Gallery is running a small bus to a curated selection of studios. Hop on the Trail Bus for a guided tour and enjoy the Studio Trails journey from the comfort of a passenger seat. The Bus leaves from Gympie Regional Gallery, 39 Nash Street. Bring your lunch and a water bottle. Snacks provided.

Departure 9:30am

Return - Approximately 4pm

Cost: \$15

Limited places - Bookings essential!



GET IN TOUCH

admin@makersfair.au

WEBSITE

www.makersfair.au

FACEBOOK

www.facebook.com/GympieRotaryHeritageMakersFair

INSTAGRAM

www.instagram.com/gympiequiltcraft/
www.instagram.com/gympieheritagecrafts/

WHEN

Saturday, July 5, 2025 8.30am - 5.00pm

Sunday, July 6, 2025 8.30am - 3.00pm

WHERE

FAIR: The Pavilion, 77 Exhibition Rd, Gympie

FARM: 77 Ratdke Rd, Kia Ora, Gympie

RELICS: 4/ 25 Edwin Campion Dr, Gympie

EVENT VIDEO

<https://youtu.be/B-yOnt1p5vM>

TICKETS

Saturday ticket sales are capped, so please book to avoid disappointment! And skip the queue.

(Capping does not apply to 2-Day Weekend Passes)

<https://www.trybooking.com/CYKKU>

COST

\$15 per adult per day | \$20 2-day weekend pass | KIDS under 15 FREE



This project received funding assistance from the Gympie Regional Council's Community Grants Program 2024/2025

A BIG THANK YOU TO OUR SPONSORS

Your support helps the Rotary Club of Gympie bring this event to life, benefiting charities, community groups and our artisan community. Thanks to you, the Fair has grown into one of the largest of its kind in Queensland.

